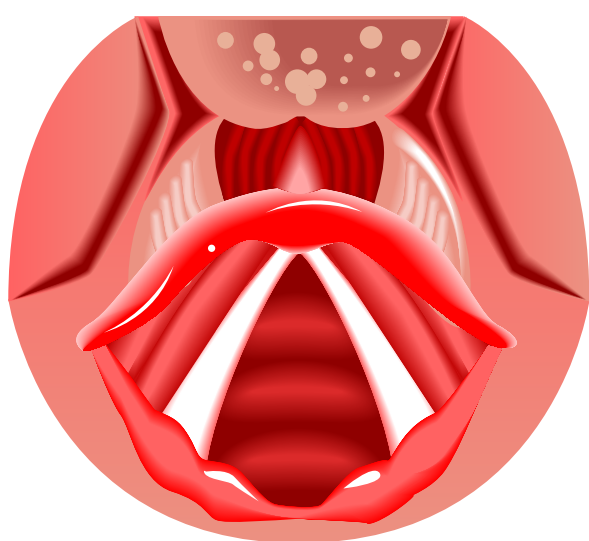
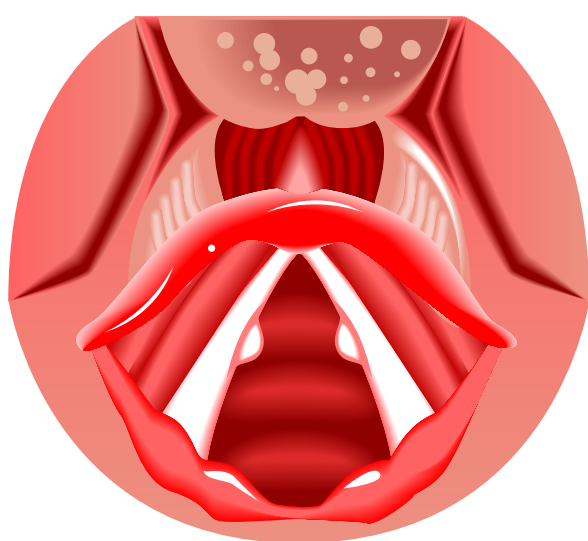


NODULES, CYST, POLYP HEMORRHAGE & GRANULOMAS

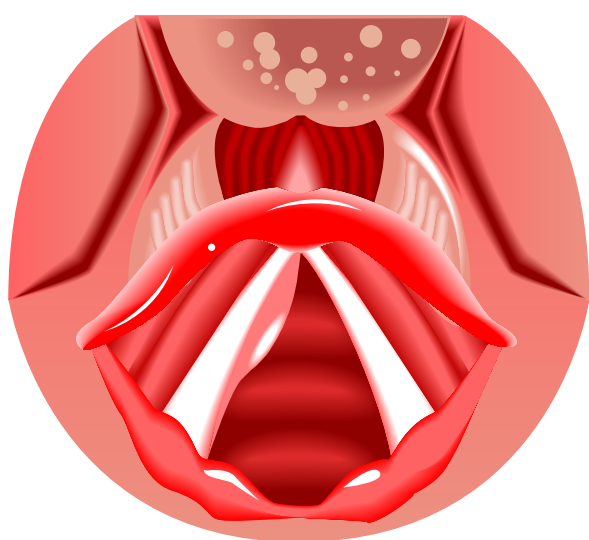


Normal Folds



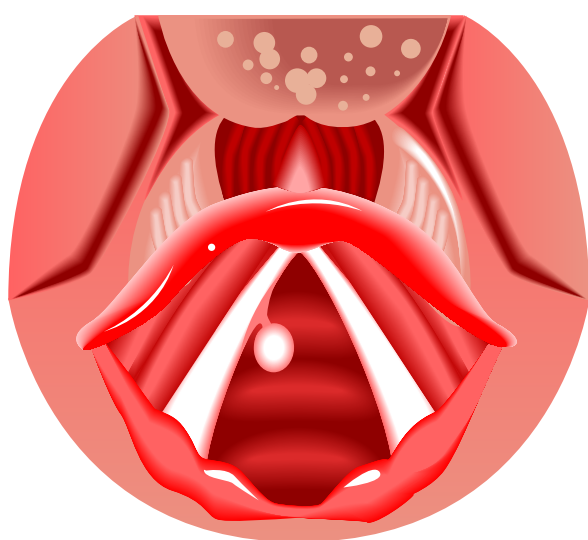
Nodules

Aka "Singers' Nodes": firm scar tissue, or calluses, that appear in pairs on both sides of the fold at the midpoint where repeated collision trauma is greatest.



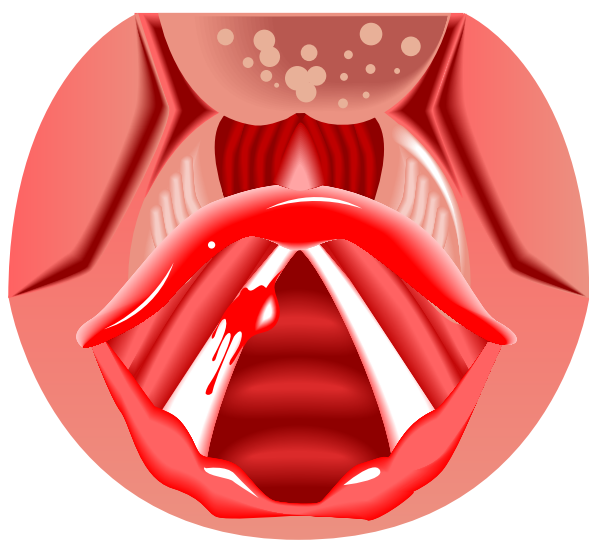
Cyst

Spherical or ovoid structures located deeper within the fold than nodules or polyps. They can be solid (keratin cyst) or filled with fluid (mucus retention cyst).



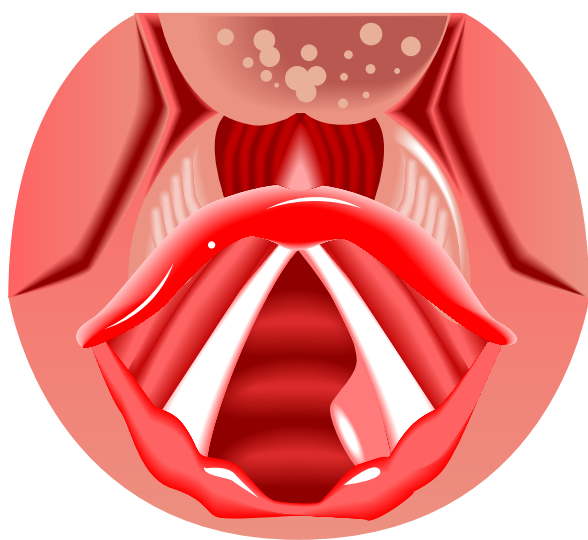
Polyp

Softer, more gelatinous than nodules. Polyps protrude from the free edge of the fold. They appear first on only one fold, but a reactive nodule may form at the contact point with the opposite fold.



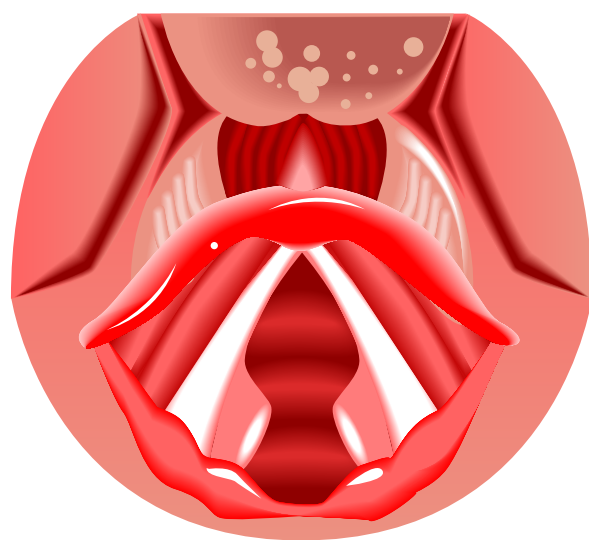
Hemorrhage

A polyp that has a leaking blood vessel (hemorrhage) within the fold, resulting in a hemorrhagic polyp



Granuloma

An inflammatory growth typically occurring on the back, or posterior, portion of the vocal folds, on either one side or both sides.



Granulomas

Bilateral granulomas due to intubation.

For more information about how your voice works please visit www.singlikeastar.com



Sing Stronger. Sing Higher.
Sing Like a Star.